



# Education Brief



# Our track record

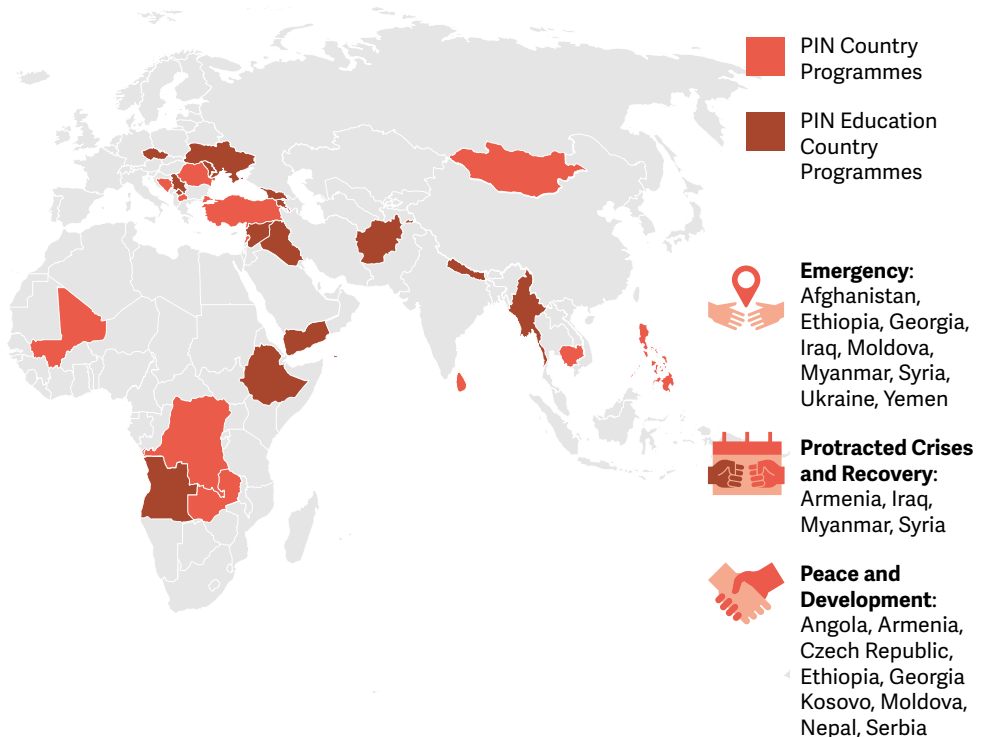
## Our background

People in Need (PIN) is an international NGO established in 1992 in the Czech Republic. With an annual turnover of 238 million GBP and over 2,400 employees, PIN is the **largest INGO in Central and Eastern Europe**. PIN delivers multisector development and humanitarian programming in 27 countries, supporting over **4.39 million people in 2022 alone**. Our annual reports are available on PIN's website.

## Where we work

PIN's education programming has a particular focus on children and youth affected by crises and living in active **conflict, protracted crises** and **early recovery contexts**.

### People in Need's 2022–2023 Education Interventions



# Who we work with

Within these country contexts, in 2022 PIN worked with:

- **Over 82,100 school-aged children and 6,086 youth** (5–29 years old), with a focus on the most marginalised, vulnerable and at risk.
- **2,847 teachers, other education personnel** and non-specialised psychosocial support (PSS) facilitators.
- **17,967 parents & caregivers** of in- and out-of-school children.
- **Local actors** including authorities, national NGOs, local CSOs, community groups, and local education institutions.

PIN is an active member of:



## Value Add

**Strong partnership modalities** and track record providing meaningful support to civil society.

Effective application of relevant and up-to-date **best practices**, adherence to **minimum standards** and engagement in coordination and advocacy forums.

## How we work

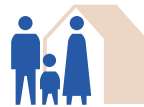
PIN's education programming cuts across the **three guiding pillars** of our Relief and Development Department's 2022–26 Strategy.



Emergency response and recovery



Climate Resilience



Civil Society and Inclusive Governance

PIN's education programming

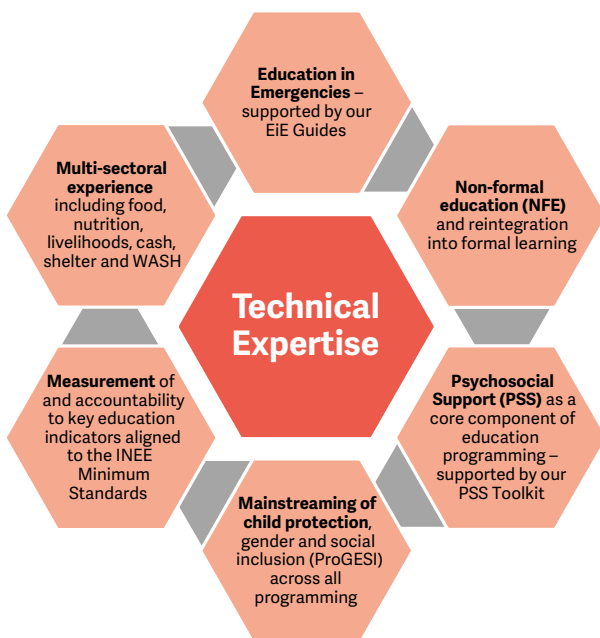
## Technical expertise

A core strength of PIN's programming is our **qualified and dedicated in-country teams** of over 100 education staff. Our staff are supported by our HQ-based Knowledge and Learning Department (KLD), which boasts an **experienced pool of technical experts**.

PIN has expertise in several technical areas related to education<sup>1</sup>.

### Contributions to shared initiatives

1. Certificate of Advanced Studies in EiE certified by University of Geneva
2. Development of content for multi-agency Kaya EiE Online Course
3. Fundamentals of EiE courses



### Value Add

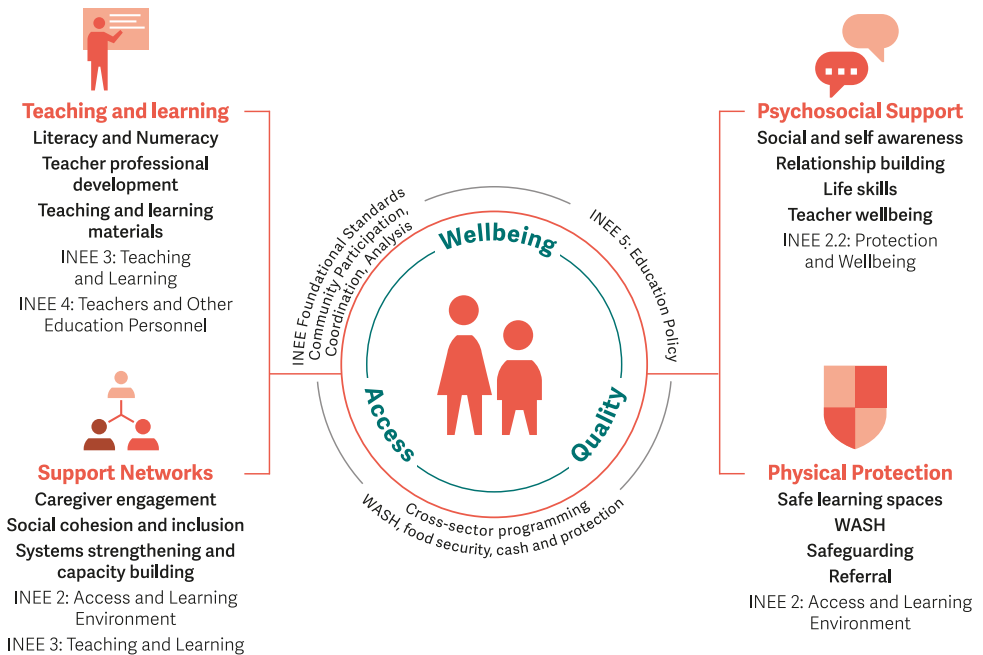
Ability to **provide technical support** to global and local stakeholders, support professional development and effective ProGESI mainstreaming.

<sup>1</sup> Whilst not covered under this brief, PIN also has expertise in technical vocational education and training (TVET) and civic engagement

# A child-centred approach

PIN puts the **child at the centre of all our education work**, recognising that learning and holistic development requires children’s diverse needs to be met. This means not only supporting children’s learning but also:

- protecting them;
- prioritizing wellbeing and development of social and emotional skills;
- strengthening support networks; and
- improving access to basic services (WASH, nutrition, shelter, cash and livelihoods) through cross-sector response



## Working across the nexus

In order to realise the change we want to see, PIN work across the humanitarian-development-peace nexus. This means:



**mitigating risks** and **preparing** for potential disruption,



Including education as part of an immediate **emergency response**,



working throughout **protracted crises** and into the **recovery** phase,



and supporting longer-term **development and peace** building initiatives.

People in Need is a Czech nongovernmental organisation (NGO) that has been providing aid in troubled regions and supporting human rights since 1992. Since then, People in Need has grown into one of the largest NGOs in Central Europe. Today, its work focuses on humanitarian and development aid, advocacy for human rights and democratic freedom, field social work, and education, awareness and information.

[peopleinneed.net](http://peopleinneed.net)

[alliance2015.org](http://alliance2015.org)

Šafaříkova 635/24  
120 00 Prague 2,  
Czech Republic

Contact Us:  
[pin.eie@peopleinneed.net](mailto:pin.eie@peopleinneed.net)

PIN's Work in Education in Emergencies:  
[bit.ly/PINEiE](https://bit.ly/PINEiE)

Knowledge & Learning Centre:  
[resources.peopleinneed.net/education](https://resources.peopleinneed.net/education)

Indikit: [www.indikit.net/education](http://www.indikit.net/education)

